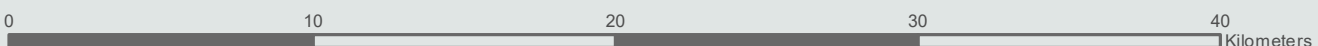
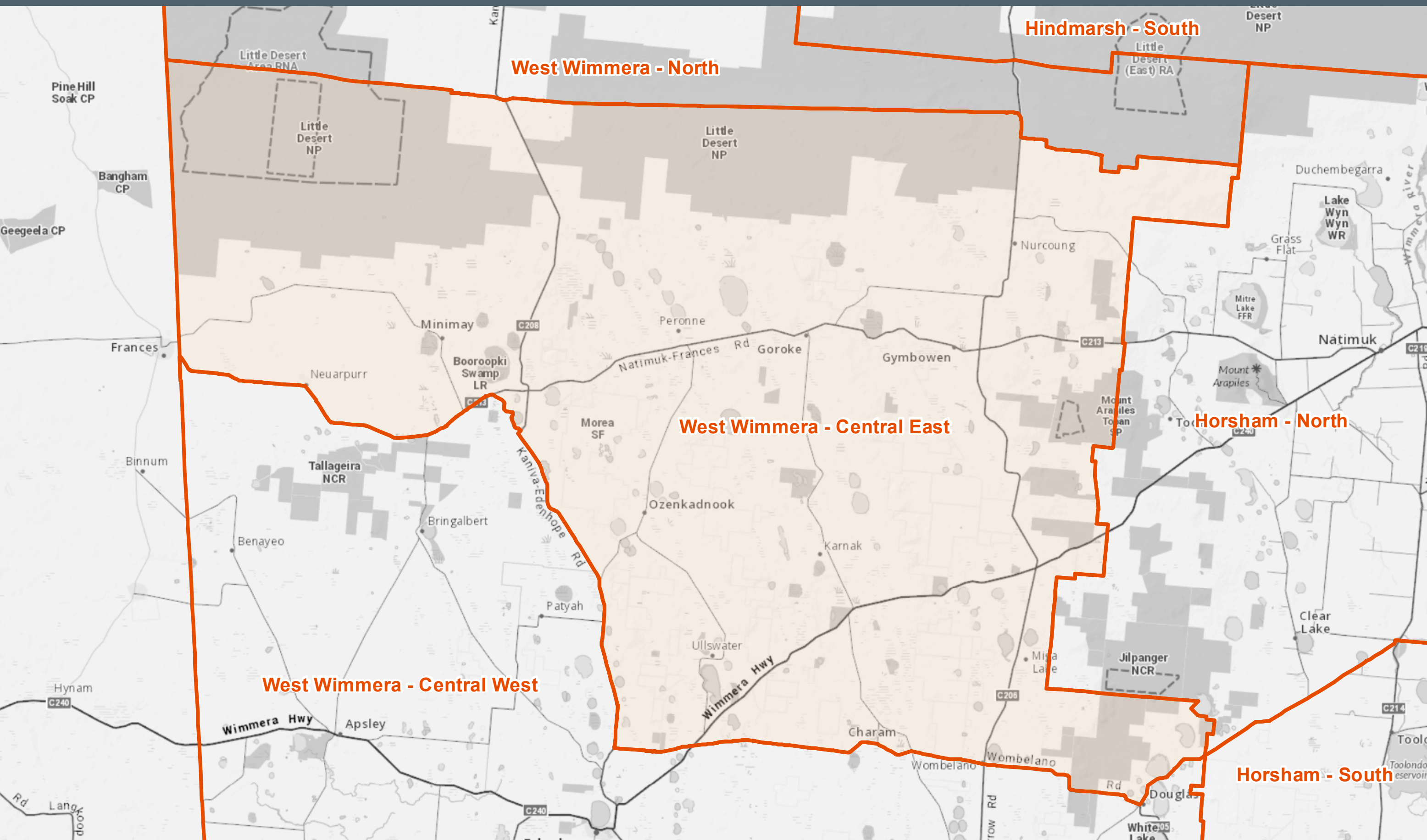




Fire Danger Period Areas - West Wimmera - Central East



Disclaimer: This map is a snapshot generated from Victorian Government data as well as data from various other sources. This does not guarantee that the publication is without flaw of any kind or is wholly appropriate for your particular purposes and therefore disclaims all liability for error, loss or damage which may arise from reliance upon it. All persons accessing this information should make appropriate enquiries to assess the currency of the data.

Explanation: Some municipalities (shire or council) are split into smaller areas for Fire Danger Period Declarations. This map helps understand where these splits are.

Job ID: 20201013000 / BIP-1357
Date Prepared: 26/10/2020

Legend

Fire Danger Period Areas