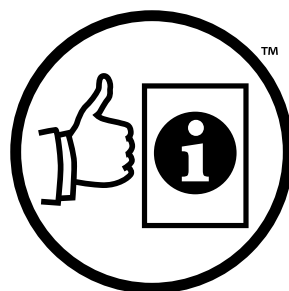


Bushfire risk areas

CFA



Easy English

Hard words



This book has some hard words.

The first time we write a hard word

- the word is in **blue**

- we write what the hard word means.

You can get help with this book



You can get someone to help you

- read this book

- know what this book is about

- find more information.

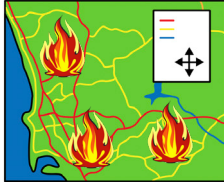


We will write contact information at the end of this book.

About this book



This book is from CFA.



This book is about **bushfire risk areas**.



Bushfire risk area means somewhere a bushfire is more likely to happen.



You need to be ready for bushfires so you can

- leave early



- stay safe.

Where can bushfires happen?



Bushfires can happen in places far away from cities and towns.



Bushfires can also happen

- in a suburb of a city



- on the edge of towns.



Bushfires are very dangerous.



Bushfires can

- burn down houses



- kill you.

Where are bushfire risk areas?



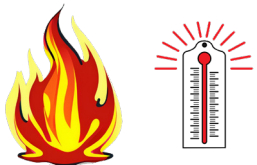
Some places have more bushfires than others.

Places with lots of trees



Places with lots of trees are bushfire risk areas.

When there are lots of tall trees close together a bushfire can be very dangerous.



The fire will

- be very hot

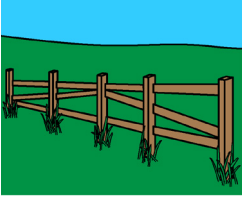


- make lots of smoke.

Places near grass



Places with a lot of grass are bushfire risk areas.



Places with a lot of grass might be

- paddocks

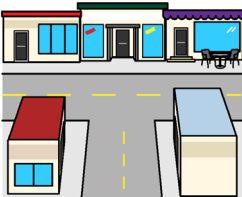


- empty blocks of land.

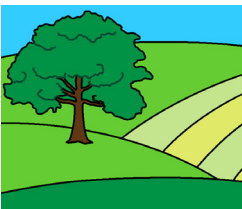


You might live near a lot of grass

- in a town



- in a suburb of a city



- in the country.



Fires in grass

- can move very fast.

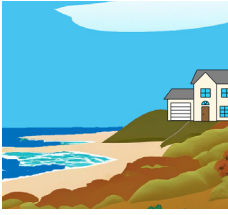


- are dangerous.

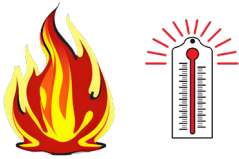


Homes next to the grass areas can catch fire.

Places near the beach



Homes near the beach can be bushfire risk areas.



Fires in places near the beach

- are very hot



- move very fast.



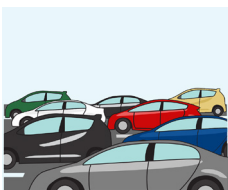
There can be a lot of wind near the beach.



The wind can make fires more dangerous.



In summer there might be a lot of people at the beach.



Roads can be very busy.

More information



For more information contact CFA.



Website cfa.vic.gov.au



You can call the VicEmergency Hotline for more information about fires in your area.



Call 1800 226 226



Call 000 in an emergency.

You can read the full information on our website.



Website cfa.vic.gov.au/plan-prepare/am-i-at-risk

If you need help with English



Use the free Translating and Interpreting Service or TIS to make a phone call.

You can call the TIS in your language.



Call 131 450

Give the TIS officer the phone number you want to call.

If you need help to speak or listen



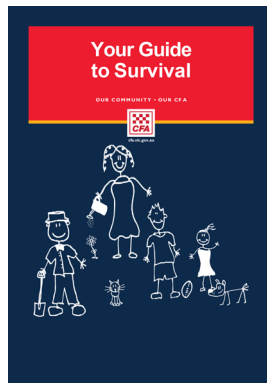
Use the National Relay Service to make a phone call.



Call 1800 555 677



Website accesshub.gov.au/nrs-helpdesk



This book is an Easy English translation of part of Your Guide to Survival.

The plain text in this document is licensed under the Creative Commons Attribution 4.0 International Licence. This Easy English document was created by Scope (Aust) Ltd. using Picture Communication Symbols (PCS) and these PCS are not licensed under a Creative Commons licence.

PCS is a trademark of Tobii Dynavox, LLC. All rights reserved. Used with permission. This document must not be sold to third parties. The PCS must not be reused without permission. For more information about the PCS, contact Scope on 1300 472 673 or visit scopeaust.org.au

Version 2 January 2024

